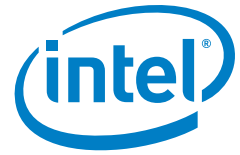


Intel® Learning Series



Advancing Education Worldwide

Product Brief

Intel-powered clamshell
classmate PC

Part of the Intel® Learning Series

Netbooks designed for 21st century education

The Intel-powered clamshell classmate PC is helping countries and schools worldwide to deliver effective, affordable 1:1 eLearning for students ages 5-12. Students and teachers have a full-featured PC designed especially for education—based on extensive ethnographic research on how real classrooms succeed. The Intel-powered clamshell classmate PC is more durable and capable than ever before with new features and software.



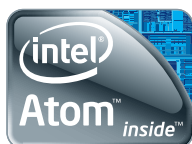
- Classroom management and learning software
- Water-resistant keyboard and screen
- Ergonomic, child-friendly, rugged design
- Drop-proof to 70 cm
- High performance Intel® Atom™ processor
- Designed to streamline service and support
- And much more



The power of eLearning

Governments and educational leaders worldwide are seeking affordable, smart, sustainable ways to increase educational quality. Recent research on eLearning—the use of information and communication technology (ICT) in education—indicates eLearning can deliver the desired education improvements.

The Intel-powered clamshell classmate PC is at the heart of the Intel® Learning Series—a package of hardware, software, services, and support delivered by local vendors to meet local needs—all designed to work reliably together. These local, sustainable, and scalable solutions are now being deployed around the globe.





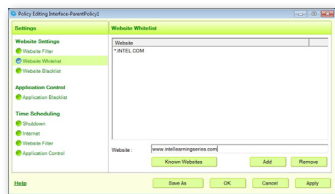
Software for a complete learning experience

Hardware is not enough to turn technology into a true learning tool. The Intel® Learning Series Software Suite offers a wide range of compelling applications—from classroom collaboration and access management to computer management and creative tools. Tested in real 1:1 learning environments for high performance, the Intel Learning Series Software Suite helps reduce total cost of ownership, while providing easy deployment and platform management. Schools value this comprehensive educational solution, supporting teaching and eLearning activities crucial to the development of 21st century skills. Governments are finding the robust, rugged, and secure classmate PC a cost-effective and powerful solution for empowering the next generation of learners.

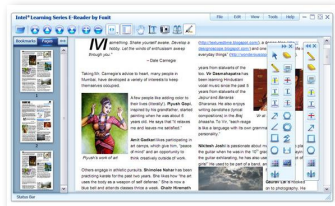
- **Students:** Gain engaging and exciting tools to foster intuitive, interactive, collaborative learning
- **Teachers:** Gain tools to enhance lessons, be more responsive to student needs, and transform teaching methods
- **Parents:** Gain confidence that children are learning in new ways, while staying focused and protected
- **IT Administrators:** Gain tools to help reduce total cost of ownership and simplify management, along with hardware that is more robust and rugged than traditional technology



Classroom Management*



Access Management*



E-Reader*



WebCam Companion*

Collaboration & Classroom Management

- Classroom management & collaboration application suite

IT Management

- Access management
- Theft deterrent
- Platform management

Reading & eLearning

- eReader with annotation
Supports ePub, chm, HTML, rtf, and PDF formats with access to millions of ebooks

Micro-mobility & Ease-of-Use

- Easy webcam app with annotation and digital archive

Specifications

Education-oriented features ensure superior, lasting performance
System configuration of the Intel-powered clamshell classmate PC



Model	ECS E10IS2	ECS E11IS2	JP Sá Couto MG10T-PT	JP Sá Couto MG101A3
Processor	Intel® Atom™ Processor N450 at 1.66 GHz	Intel® Atom™ Processor N455 at 1.66 GHz	Intel® Atom™ Processor N450 at 1.66 GHz	Intel® Atom™ Processor N455 at 1.66 GHz
Chipset	Intel® NM10 Express Chipset			
Memory	1 GB	DDR3 (up to 2 G)	1 GB	DDR3 (up to 2 G)
Storage	8G, 16 G, 32 G Flash (SATA) 160 GB 2.5" HDD (SATA) with HDD Protection	8 GB, 16 GB, 32 GB SSD (SATA) 160 GB, 250 GB 2.5" HDD (SATA) with HDD Protection	8G, 16 G, 32 G Flash (SATA) 160 GB 2.5" HDD (SATA) with HDD Protection	8 GB, 16 GB, 32 GB SSD (SATA) 160 GB, 250 GB 2.5" HDD (SATA) with HDD Protection
Operating System	Linux*, Windows 7*			
LCD	10.1" LCD 1024 x 600		10.1" LCD (1024 x 600) with light sensor to auto adjust brightness	
Connectivity	Wireless LAN 2.4 Ghz; 802.11b/g/n; 3G & WiMAX (optional)			
Keyboard	84 keys, 240mm wide Water-resistant keyboard Anti-microbial (optional)	84 keys, 250mm wide Water-resistance Anti-microbial (optional)	84 keys, 240mm wide Water-resistant keyboard Anti-microbial (optional)	84 keys, 250mm wide Water-resistance Anti-microbial (optional)
Battery Life^{^^}	4-cell battery (5 hours) 6-cell battery (7.5 hours)	3-cell battery (up to 3.5 hours) 6-cell battery (up to 6.5 hours) High-capacity 6-cell battery (up to 9.5 hours)	4-cell battery (5 hours) 6-cell battery (7.5 hours)	3-cell battery (up to 3.5 hours) 6-cell battery (up to 6.5 hours) High-capacity 6-cell battery (up to 9.5 hours)
Audio	Integrated 2-channel audio			
Speaker/Microphone	Built-in speaker and microphone			
Dimensions	263 x 255 x 38mm	267.6 x 237.7 x 30.3/34.7mm	263 x 263 x 38mm	259x243.5x38.8mm
Weight	1.4 Kg (with 4-cell battery)- 1.6 Kg (with 6-cell battery)	1.32 Kg (with 3-cell battery)- 1.54 Kg (with 6-cell battery)	1.4 Kg (with 4-cell battery)- 1.6 Kg (with 6-cell battery)	1.32 Kg (with 3-cell battery)- 1.54 Kg (with 6-cell battery)
Camera	0.3 MP/1.3 MP			
Drop Test^{^^^}	70 cm ^{^^^}			
Education Software Stack	Available pre-loaded			

^{^^} Based on 10" LCD and defined brightness, WiFi off, and camera disabled. Actual battery life may vary based on product settings, usage patterns, and environmental conditions

^{^^^} Industry standard drop test 30cm

Benefits at a Glance



Governments

- Rugged PC with robust applications provides an education solution that is both affordable and sustainable
- Interoperable with broad, industry-leading product base from the Intel® Learning Series
- Flexible and scalable for districts, states, countries
- Delivered by local vendors for local economic growth
- Supports development of 21st century skills needed for global economy
- Safety features include theft deterrence and access management software to help protect students from harmful content
- Tools and services for simplified, managed deployment



Schools

- Preloaded with education-focused software
- Runs hundreds of popular applications
- Simple digital-content distribution capabilities and support for multiple learning styles
- Multimodal and peer-driven learning through interaction and collaboration
- Ability to share up-to-date digital resources for lesson preparation
- Opportunities for professional growth and development
- Locally available IT support

For more information, visit: intellearningseries.com.

For sales information, contact your Intel® Authorized Reseller.

Intel® Learning Series

Advancing Education Worldwide

